



BGP meets the University

*BGP Management
Consulting*



Speakers



Silvia Caslini

CHRO
Organizzazione e risorse umane
eMail: silvia.caslini@bqp.it



Maria Picciotti

Manager
AI-LOG
eMail: maria.picciotti@ai-log.it



Matteo Tencani

Partner & COO
AI- LOG
eMail: matteo.tencani@ai-log.it



Fabrizio Benigno

Partner & Director
Business Line Analytics & Process Mining
eMail: fabrizio.benigno@bqp.it

Agenda

Who BGP is

On boarding and career path

BGP 4 University: opportunities and collaboration

Focus on Analytics & Process Mining

Focus on AI-LOG

Presentation of the Hackathon

Final considerations and Q&A session

Speakers



Silvia Caslini

CHRO
Organizzazione e risorse umane
eMail: silvia.caslini@bqp.it



Maria Picciotti

Manager
AI-LOG
eMail: maria.picciotti@ai-log.it



Matteo Tencani

Partner & COO
AI-LOG
eMail: matteo.tencani@ai-log.it



Fabrizio Benigno

Partner & Director
Business Line Analytics & Process Mining
eMail: fabrizio.benigno@bqp.it

Agenda

Who BGP is

On boarding and career path

BGP 4 University: opportunities and collaboration

Focus on Analytics & Process Mining

Focus on AI-LOG

Presentation of the Hackathon

Final considerations and Q&A session

Who BGP is



BGP at a glance

BGP Management Consulting has a track record in delivering excellence to major clients, across multiple industries and for solutions under the *governance of C-levels*. Our core business is the design and the delivery of complete solutions for *ERPs, Business Intelligence and Analytics, Process Mining and Performance Management*.

350+ Resources
EMPLOYEES

130 Active clients
MARKET

2 Offices
GEO LOCATION

5% R&D
INVESTMENTS

7 Business Units + AI-LOG
2 BL COMPETENCE
5 IL INDUSTRY



33,3 M€
REVENUES 2021

+35 Years
HISTORY & EXPERIENCE

+10 Partnership
STRATEGIC ALLIANCES

80% Revenues @ SAP
GOLD SAP PARTNER



What we do

INDUSTRY

- Fashion
- Utilities & Transportation
- Oil & Gas
- Manufacturing
- Financial Services

LINE OF BUSINESS

Finance
Treasury
Planning & Controlling
Logistics
Operations & Supply Chain
Human Capital

JOIN YOUR
TALENTS TO OURS



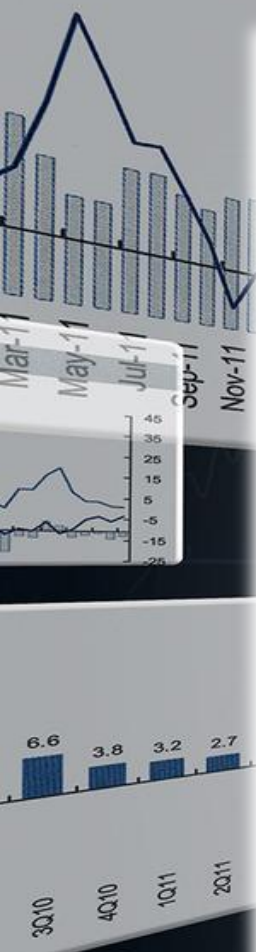
AI-LOG
BGP company

Business Intelligence & Analytics

Technology



Main Customers



Consultant @ BGP



Graduated in **Economics** or **STEM** with a **strong interest in developing and combining business process with technology** skills, working with customers to explore new opportunities and manage the change with **innovative solutions**.



In addition to the academic path, we appreciate **passion, curiosity** and propensity for a **professional growth** in a **collaborative environment**.

Must haves: problem solving, goal oriented and proactive attitude, interpersonal skills, inclination for team working, passionate about technology and innovation.

Why BGP

Excellence, quality and Customer satisfaction

- Focus on customers with an approach based on innovation, integrity and trust

Trust & Collaboration

- Entrepreneurship and courage is needed and required, to handle challenges in a collaborative environment where the merit pays. The growth of our people is our goal

People at the center

- Professional and personal growth focus, according to attitude and talent. An engaging environment, where to experiment skills and prove potential

Work-Life Balance

- Flexible smartworking policy. Wellbeing: benefits and services for our people and their families

Speakers



Silvia Caslini

CHRO
Organizzazione e risorse umane
eMail: silvia.caslini@bqp.it



Maria Picciotti

Manager
AI-LOG
eMail: maria.picciotti@ai-log.it



Matteo Tencani

Partner & COO
AI-LOG
eMail: matteo.tencani@ai-log.it



Fabrizio Benigno

Partner & Director
Business Line Analytics & Process Mining
eMail: fabrizio.benigno@bqp.it

Agenda

Who BGP is

On boarding and career path

BGP 4 University: opportunities and collaboration

Focus on Analytics & Process Mining

Focus on AI-LOG

Presentation of the Hackathon

Final considerations and Q&A session

Onboarding and growth path



Academy + Training on the job,
side by side to senior
consultants, team working, project
experience



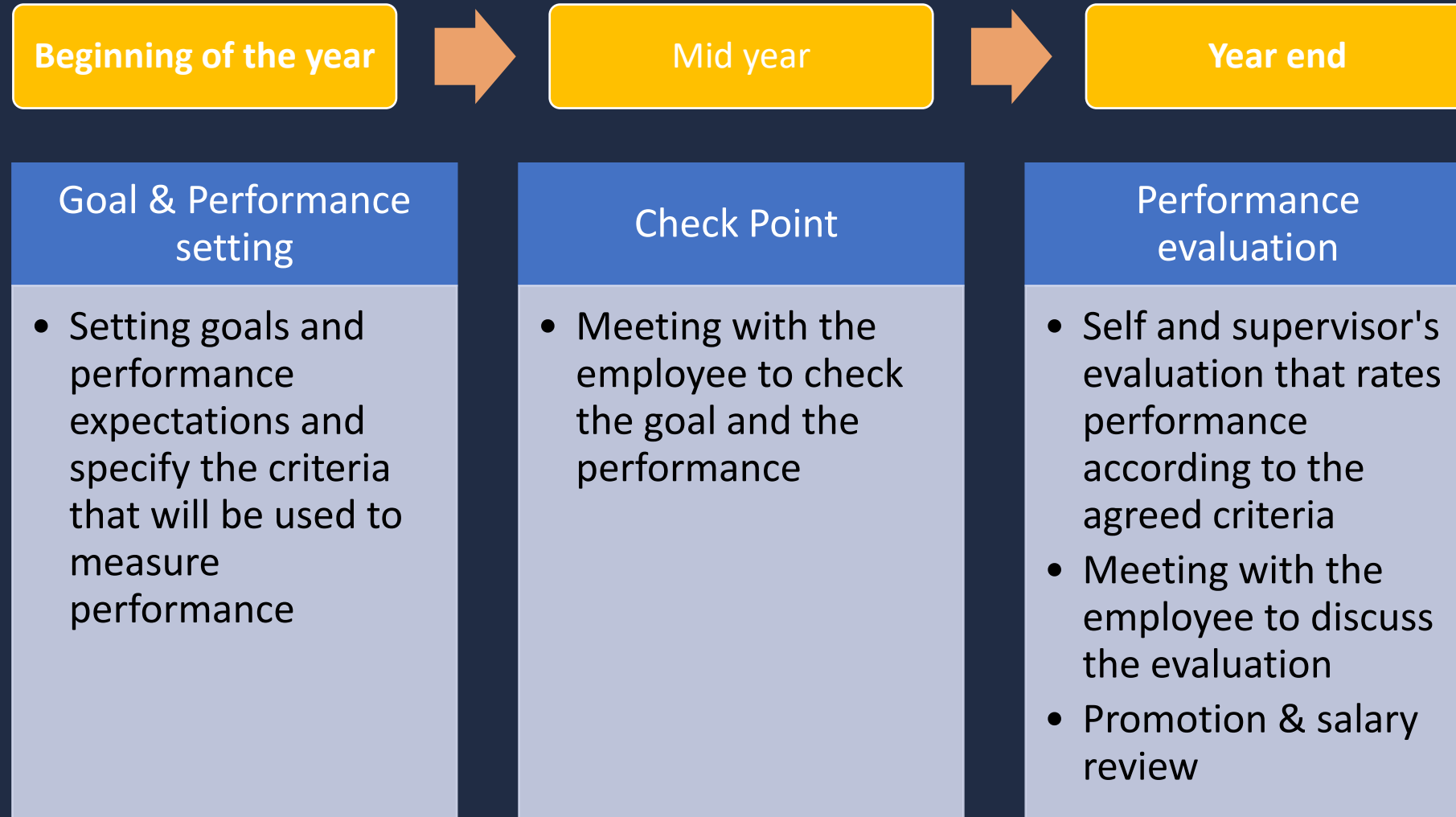
Continuous training to increase
functional and technical
competences (courses and
certifications), soft and
managerial skills



Goal setting & performance
evaluation.
Annual performance assessment
process

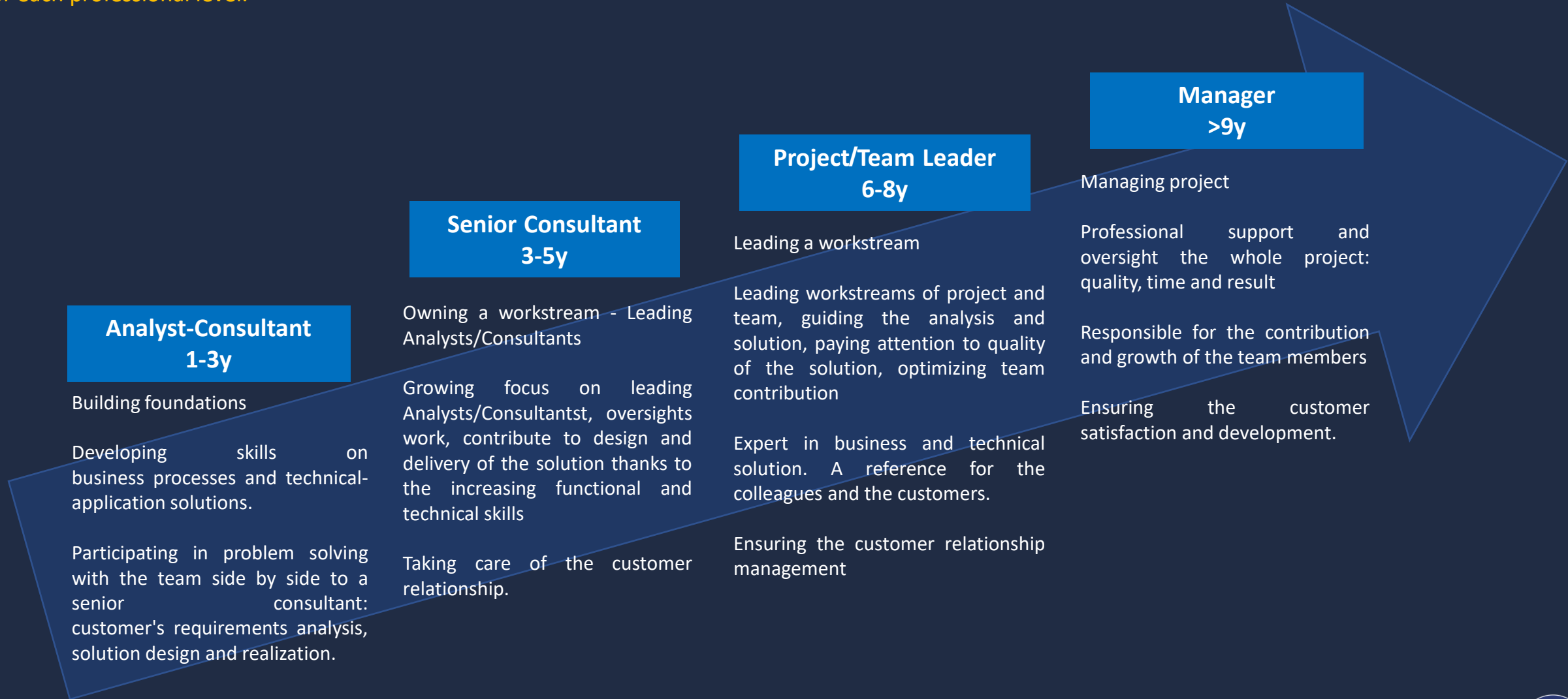
3 - 6 months internship + permanent contract

Annual performance assessment process



Career path

Promotions and career are based on meritocracy and linked to the Expectation Framework - a set of criteria that defines the performance expectation for each professional level.



Speakers



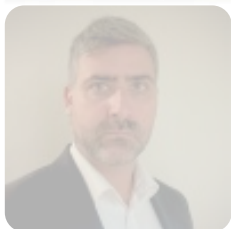
Silvia Caslini

CHRO
Organizzazione e risorse umane
eMail: silvia.caslini@bqp.it



Maria Picciotti

Manager
AI-LOG
eMail: maria.picciotti@ai-log.it



Matteo Tencani

Partner & COO
AI- LOG
eMail: matteo.tencani@ai-log.it



Fabrizio Benigno

Partner & Director
Business Line Analytics & Process Mining
eMail: fabrizio.benigno@bqp.it

Agenda

Who BGP is

On boarding and career path

BGP 4 University: opportunities and collaboration






Focus on Analytics & Process Mining

Focus on AI-LOG

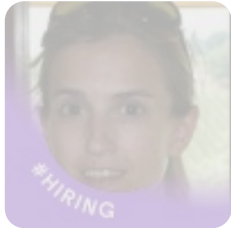
Presentation of the Hackathon

Final considerations and Q&A session

BGP 4 University: opportunities and collaboration

Type	Description	Objectives	Duration	Mode	who's it for?	
	Academy	Full time training	Job placement	3 full time weeks	<ul style="list-style-type: none"> • 2 weeks in "virtual classroom" • 1 week in presence 	<ul style="list-style-type: none"> • Undergraduates • Recent graduates • Graduates
	Events & workshops	<ul style="list-style-type: none"> • Deep dive meeting concerning a specific topic • Presentation of one or more business cases 	Sharing real cases and digital transformation projects with students	From 2 to 8 hours	Both: virtual meeting or in presence	All the students
	Hackathon or Business Challenge	Event lasting one or more days dedicated to intensive collaboration on a project	Operational development of a project by the students	2 full day + working time	In presence	<ul style="list-style-type: none"> • Undergraduates • Students of the master degree
	Stage Placement	Opportunity for internship in collaboration with BGP & AI-LOG after technical interviews	Job placement	6 months	Remote working and in presence	<ul style="list-style-type: none"> • Undergraduates • Students of the master degree
	Career Day	Participation during the Career Days	Job placement	1 or 3 full days	In presence	<ul style="list-style-type: none"> • Undergraduates • Recent graduates • Graduates

Speakers



Silvia Caslini

CHRO
Organizzazione e risorse umane
eMail: silvia.caslini@bqp.it



Maria Picciotti

Manager
AI-LOG
eMail: maria.picciotti@ai-log.it



Matteo Tencani

Partner & COO
AI- LOG
eMail: matteo.tencani@ai-log.it



Fabrizio Benigno

Partner & Director
Business Line Analytics & Process Mining
eMail: fabrizio.benigno@bqp.it

Agenda

Who BGP is

On boarding and career path

BGP 4 University: opportunities and collaboration

Focus on Analytics & Process Mining

Focus on AI-LOG

Presentation of the Hackathon

Final considerations and Q&A session

Business Line Analytics & Process Mining

What do we do?



Help our clients to realize **business value** from the data, designing **analytics** and **process mining** solutions aimed to **governance and compliance**

Run Analytics process-driven



ANALYTICS

*Operational
Analytical
Institutional
Dashboarding
SELF BI*



BUSINESS INTELLIGENCE

*Classic datawarehouse
In memory DWH
Data Lake*



PLANNING

Budget & Forecast



PROCESS MINING

*Process Excellence
Compliance
Harmonization
Process Quality
Risk & Fraud*



Portfolio of the competences

OUR EXPERTISE

- ✓ Process Performances
- ✓ Strategic Reporting
- ✓ Dashboarding
- ✓ Datawarehouse
- ✓ Self BI Approach
- ✓ Process Mining
- ✓ Budget & Forecast
- ✓ Big Data Analysis
- ✓ ML/AI



OUR STAKEHOLDERS

- ✓ C-levels
- ✓ Corporate IT
- ✓ Finance
- ✓ Process Owners
- ✓ Audit department
- ✓ Business Units
- ✓ HR department
- ✓ Logistic units
- ✓ Process improvement unit

ML/AI
Big Data Analysis
Budget & Forecast

Process improvement unit
Process
Logistic units



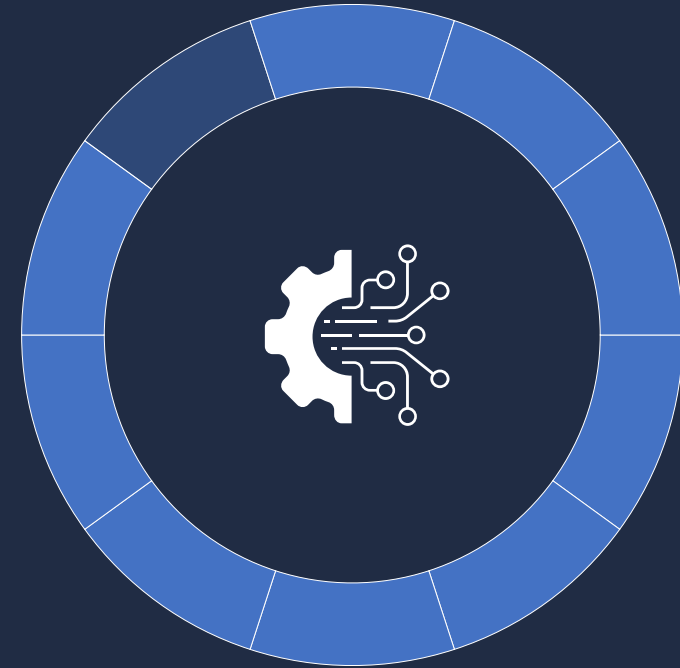
DATAWAREHOUSE

Design and implementation of DWH solutions (classic star schema and in memory approach)



REPORTING & PLANNING

Analytics designed and developed for both reporting and planning requirements



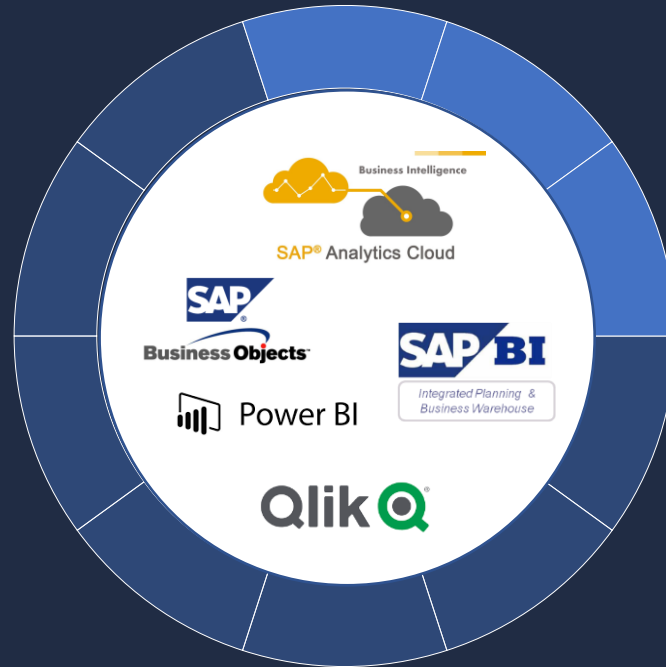
PROCESS MINING

Design and Develop of Process Discovery & Execution, Support on Analysis, Advisory



DATAWAREHOUSE

Design and implementation of DWH solutions (classic star schema and in memory approach)



REPORTING & PLANNING

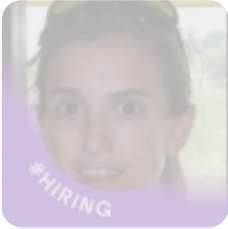
Analytics designed and developed for both reporting and planning requirements



PROCESS MINING

Design and Develop of Process Discovery & Execution, Support on Analysis, Advisory

Speakers



Silvia Caslini

CHRO
Organizzazione e risorse umane
eMail: silvia.caslini@bqp.it



Maria Picciotti

Manager
AI-LOG
eMail: maria.picciotti@ai-log.it



Matteo Tencani

Partner & COO
AI-LOG
eMail: matteo.tencani@ai-log.it



Fabrizio Benigno

Partner & Director
Business Line Analytics & Process Mining
eMail: fabrizio.benigno@bqp.it

Agenda

Who BGP is

On boarding and career path

BGP 4 University: opportunities and collaboration

Focus on Analytics & Process Mining

Focus on AI-LOG

Presentation of the Hackathon

Final considerations and Q&A session



AI-LOG
BGP company

AI-LOG

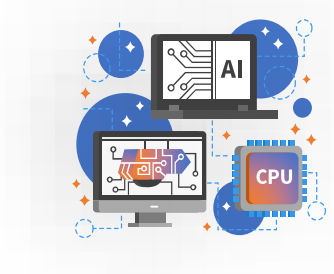
A wider view in Operations

Where passion for Operations and digital transformation meet. At the service of Industrial Sector.

Our imperative: achieve the full potential of new technologies for enterprise core processes, sculpting transformation with digital and intelligent operations



What differentiate us



Supply Chain Experience

- A team of subject matter experts in Supply Chain, Operations and Procurement
- Solid background in the leading Applications and Software in Supply chain.
- Strong Partnership with major Enterprise Software House



A network of experienced Professionals

- We are part of BGP group. We can count on more than 350 professionals
- Collaboration with key partners with distinct capabilities in several industries



Digital Technology vision

- Focus on Digital Transformation and Innovation
- Leverage our differentiated competencies in New Technologies as AI, AR/VR, Drones, Blockchain

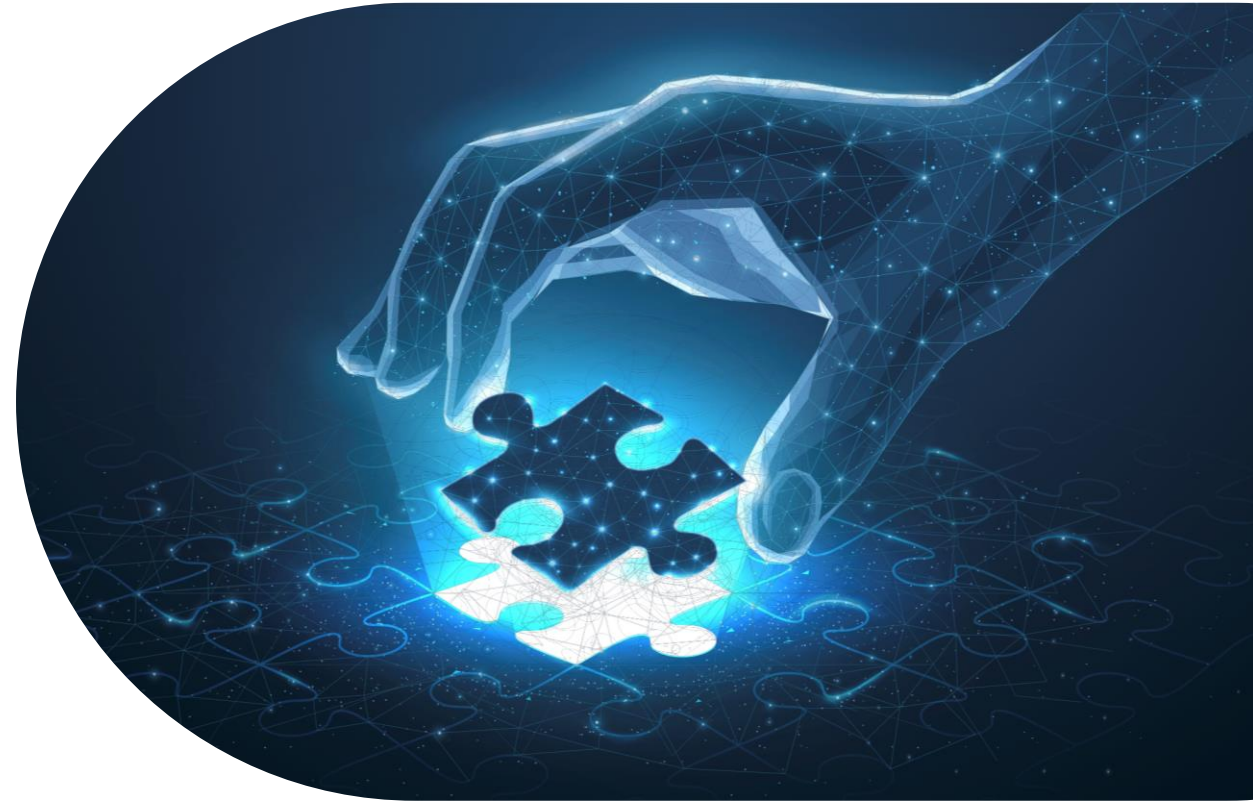


A new, different, approach

- Continuous improvement and continuous experimentation
- People centric
- Purpose-Driven

Why AI-LOG:

- AI-LOG is a **start-up**, with more than 35 years of experience
- AI-LOG is an **accelerator** for innovation, flexible and ready to jump into new opportunities for digital transformation
- AI-LOG team is composed by industry experts who are passionate about Operations Processes and puts an **additional piece** in the increasingly formed and complete puzzle of BGP management services.
- AI-LOG will **leverage** BGP network, advanced and proven Tools and accelerators, and expert advisors to grant our client professional and trusted advisory services
- The **expert team** of AI-LOG will complete the offering of BGP, driving the group services towards an End-to-end omni-comprehensive service portfolio.
- AI-LOG and BGP are already collaborating in several clients with their specific offering **by Industry**



How can we help?



End-to-end business strategy

We consider what makes your business **unique** and use that to create a competitive advantage.

We approach obstacles from all angles and develop a holistic view to **move your business forward.**



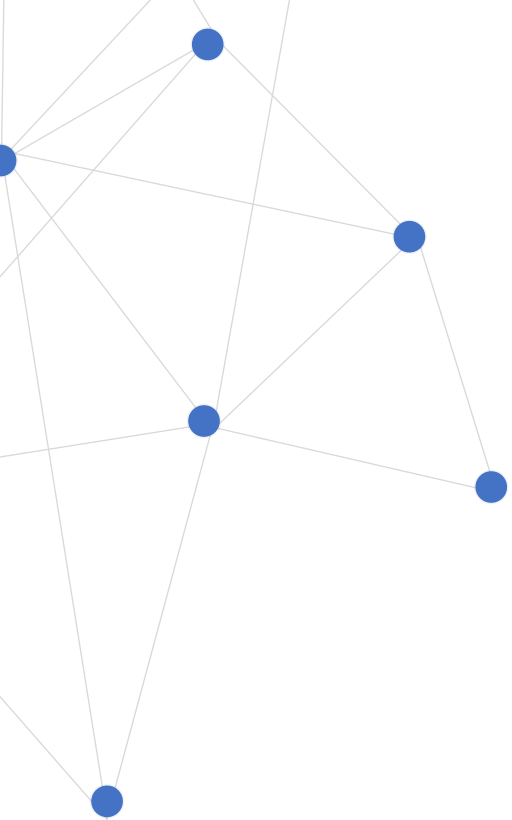
Process redesign

We evaluate and change how **applications, data and work flows impact** your business to enhance performances and create new value.



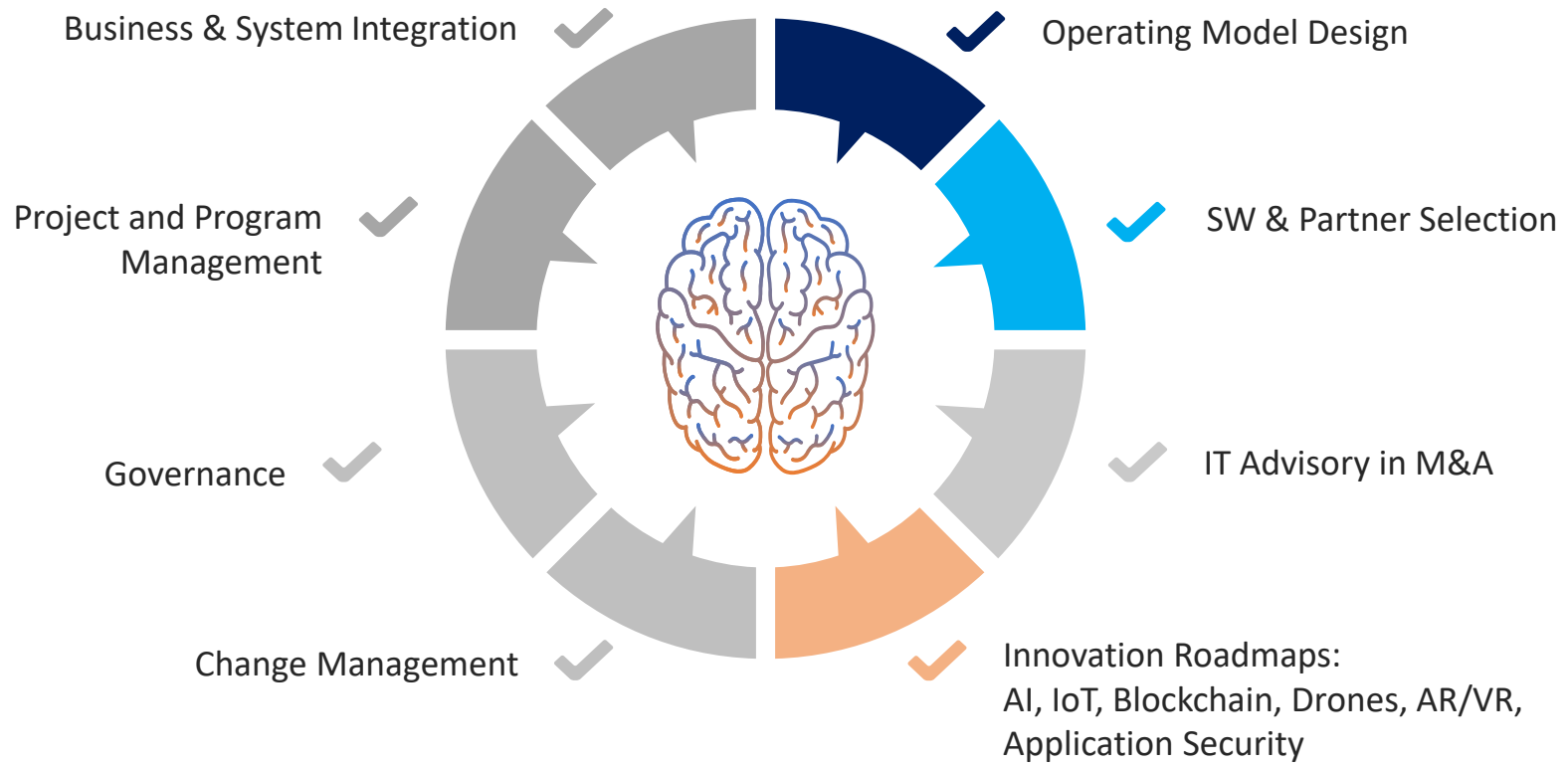
Technology transformation

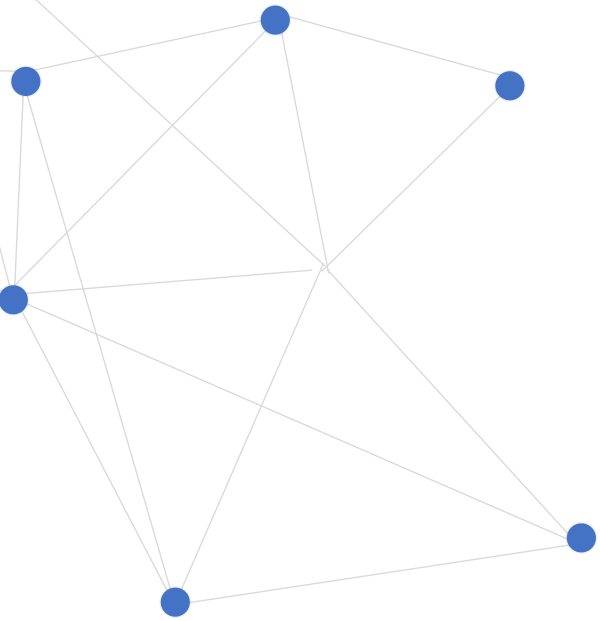
We develop tailored **solutions** to modernize your architecture and keep you a step ahead of the competition.



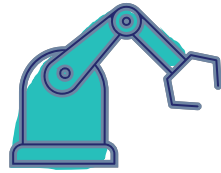
Our Services

Our team embrace collaborative and agile methodology, leveraging on both Human and Artificial intelligence, to improve your productivity

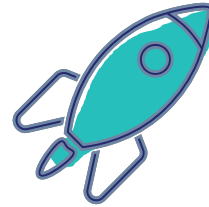




Industries and Sectors: our Focus



Industrial Goods and Services



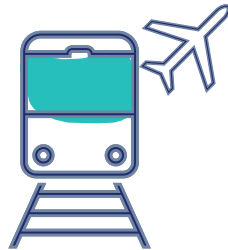
Aerospace & Defence



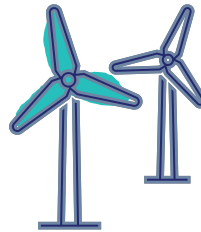
Automotive



Industrial Engineering



Transportation & Logistics



Cable Systems



Materials



Chemicals

Speakers



Silvia Caslini

CHRO
Organizzazione e risorse umane
eMail: silvia.caslini@bqp.it



Maria Picciotti

Manager
AI-LOG
eMail: maria.picciotti@ai-log.it



Matteo Tencani

Partner & COO
AI- LOG
eMail: matteo.tencani@ai-log.it



Fabrizio Benigno

Partner & Director
Business Line Analytics & Process Mining
eMail: fabrizio.benigno@bqp.it

Agenda

Who BGP is

On boarding and career path

BGP 4 University: opportunities and collaboration

Focus on Analytics & Process Mining

Focus on AI-LOG

Presentation of the Hackathon

Final considerations and Q&A session



Università di Pisa

**Data Science and
Business Informatics**

Business Challenge



Intro and Overview



Business cases



Game rules



Drivers & Score



Next Steps



Our Contacts

Intro and Overview

BGP Management Consulting has organized a “challenge” in order to reward the **best technology application solution** to cover a **business issue or requirement**.

The attendees should be coordinate themselves into different teams to compete.

They will choose one of the **uses cases proposed by BGP**.

The game requires to **develop an idea** with creativity and originality, proposing a presentation to support the **realization of the mock-up**

INTEGRATED PLANNING

From sales forecast to purchasing of raw materials

Planning phases, what-if scenarios analysis, risk measurement, predictive support, KPIs and analytics

CORPORATE WELFARE

The corporate environment that you want

The must-have values, KPIs, how to measure the liking rating, the support of IoT, real time detection and analytics

HUMAN RESOURCES

Growing talent

The recruiting process, performance appraisal (e.g. process and parameters), KPIs (qualitative and quantitative) that should be considered (e.g. % turnover rate), what-if scenarios analysis and analytics



PRICING STRATEGIES

Profit maximization and sustainability

Calculation logic, parameters to consider, simulation, KPIs, suggestions for new products, analytics

DIGITAL TWIN AND PREVENTIVE MAINTENANCE

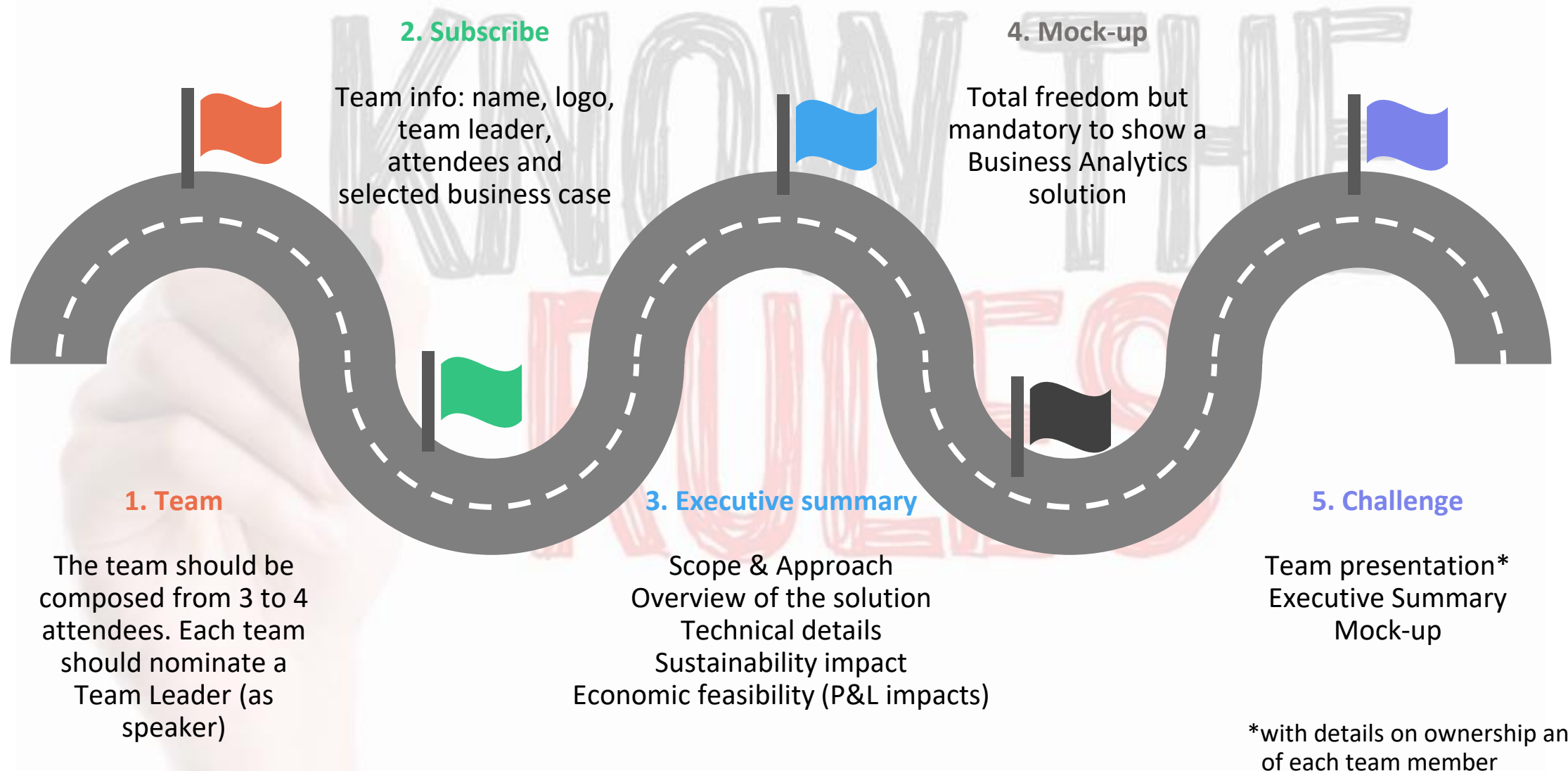
IoT & data-driven analysis

Data modeling and data quality, KPIs and supporting analytics

For all the business case we require:

- Development of original and innovative solutions
- 360° perspective of business processes (end-to-end)
- Assessment of sustainability impacts fitting to ESG
- Data-driven and analytical approach

Game Rules





1. Solution Consistency & Feasibility

Level of coverage of business requirements and technical solution feasibility
SCORE – up to 10pt



2. Team involvement

Team member ownership and tasks performed by each ones
SCORE – up to 10 pt



3. Executive summary

Quality of documentation, public speaking and fit to scope
SCORE – up to 20pt



4. Originality

Level of originality and creativity of the solution
SCORE – up to 10pt



5. Technical solution

Details of technological tools & solution
SCORE – up to 10pt



6. Sustainability

How the solution impact on the environment in a sustainable way
SCORE – up to 15pt



7. Mock-up

Presentation of POC and working model (demo) in order to show the coverage of business requirements
SCORE – up to 25pt



Next steps

Business Challenge Presentation



16 November 2022

Presentation of the challenge, definition of the rules, potential themes and evaluation drivers

Communication of attendees



19 November 2022

Due date for the attendees: communication of the team (name, logo, team leader, members) and selected business case

Final event organisation



12 December 2022

Confirmation of the participating teams at the presentation & award ceremony final day, sharing of details about program

Presentations & award ceremony



14 December 2022

Presentation of the business projects and mock-up by the different teams (25 mins per team) and awarding of the best idea

Our Contacts



Maria Picciotti

Manager

AI-LOG

BGP Management Consulting

eMail: maria.picciotti@ai-log.it



Silvia Caslini

CHRO

Organizzazione e risorse umane

BGP Management Consulting

eMail: silvia.caslini@bgr.it



Matteo Tencani

Partner & COO

AI- LOG

BGP Management Consulting

eMail: matteo.tencani@ai-log.it



Fabrizio Benigno

Partner & Director

Business Line Analytics & Process Mining

BGP Management Consulting

eMail: fabrizio.benigno@bgr.it



Final considerations and Q&A session